



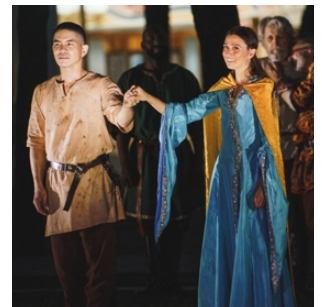
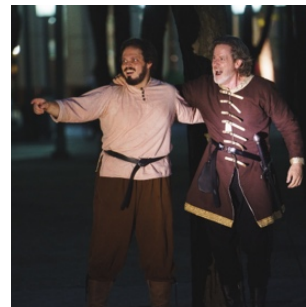
2020-2021 Season In Review

Our *Panoramic Theatre* production of *King Lear* by William Shakespeare featured Nahum Tate's 1681 romantic ending.



We were able to *reappear* for in-person performances in June, July & August 2021!

Audiences enjoyed the show in Central Park, Carl Schurz Park, Brooklyn Commons at MetroTech, and The Battery.



In our 2020-2021 season, we enriched the lives of **11,610** audience members with 5 engaging programs online and in-person!



We employed 40 amazing actors this season, including our virtual events: *It Can't Happen Here*, *A {15-Min!} Christmas Carol*, and *New York Classical Loves New York*.

We returned to perform on Governors Island in partnership with the West Harlem Art Fund! Our dramatic reading of *Antikoni* by Beth Piatote, a contemporary Native American adaptation of Sophocles' *Antigone*, was brought to life by an Indigenous creative team and cast.



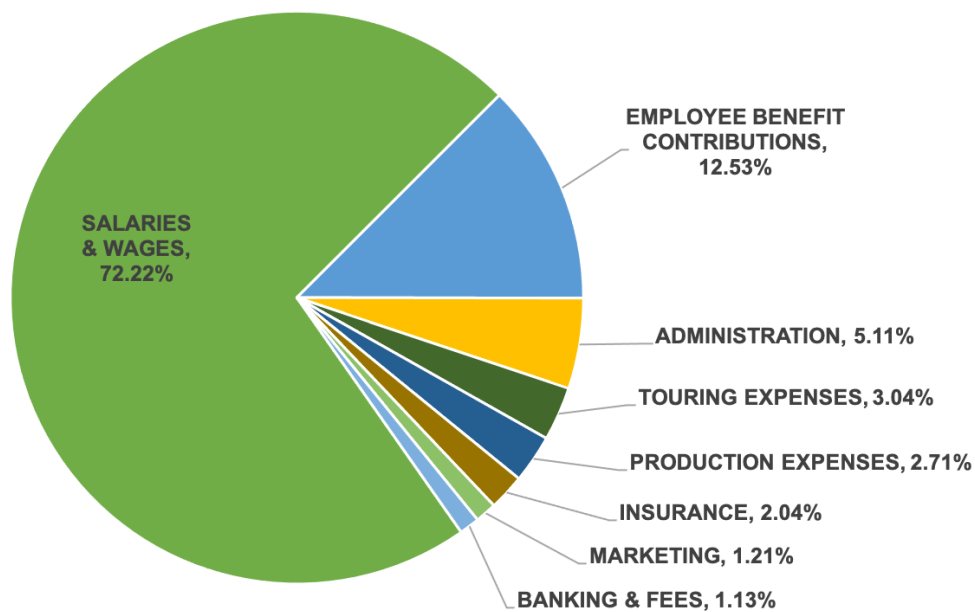
We publicly released the first edition of our **Inclusion, Diversity, Equity, and Accessibility (IDEA)** plan of action.

Our NEW Literary Director Matthieu Chapman and Casting Liaison *marcus d. harvey* contribute their perspectives as Black artists and are integral to the company's creative future.

ALL Interns are now paid!
The students and recent graduates who gained training experience with us this season were compensated as employees.

Our RELAUNCHED Artistic Associates program has grown from 10% Black, Latino/x/e, Asian, and multi-racial members to 29% this season.

Our 2020-2021 Season Spending



- SALARIES & WAGES: Cast, Crew, and Staff
- EMPLOYEE BENEFITS: Social Security, Medicare, Health & Pension
- ADMINISTRATION: Office Rent, Utilities, Software, and Supplies
- TOURING EXPENSES: Storage and Transportation
- PRODUCTION: Costumes, Props, Lighting, and Equipment
- INSURANCE: Disability, Unemployment, and Liability Coverage
- MARKETING: Promotional Printing, Postage, and Delivery
- BANKING & FEES: Payroll and Credit Card Processing, Dues

